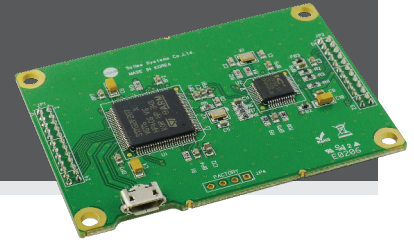


Data sheet

CSE-M24 | Embedded Serial to Ethernet Converter



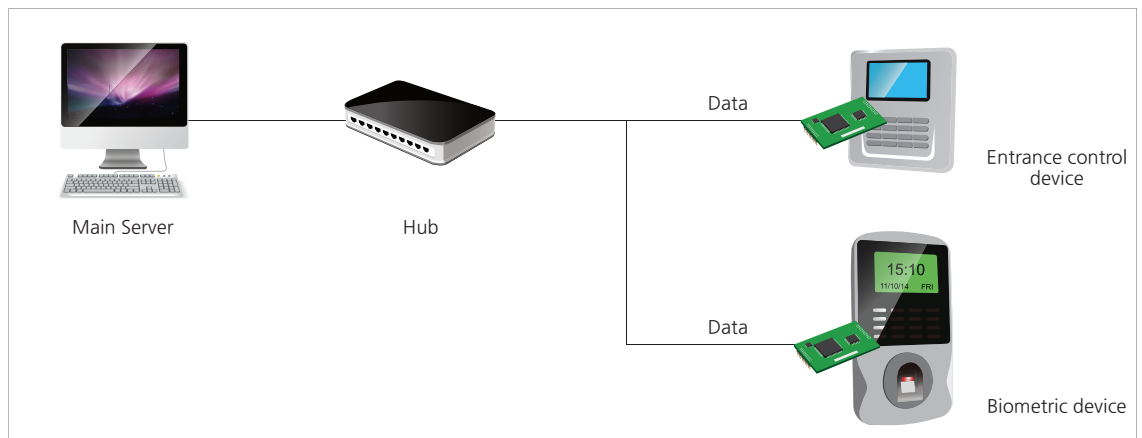
Overview

CSE-M24是为了在以太网或因特网上可以远程控制及管理最多为4个串口设备提供连接的嵌入式以太网联网模块(Serial to Ethernet Module)。将CSE-M24连接到现有设备中,在不改变现有软件系统下可以方便的连接到网络。换句话说在TCP/IP 协议下传送数据时,自动处理数据,将没有TCP/IP(TCP/IP网)技能的使用者设备轻松连接到因特网中,故可以将现有的串口设备 通信距离进行扩张。CSE-M24有4个串口接口,所以可以连接多个设备到因特网做为嵌入式模块产品应用在用户设备内部。

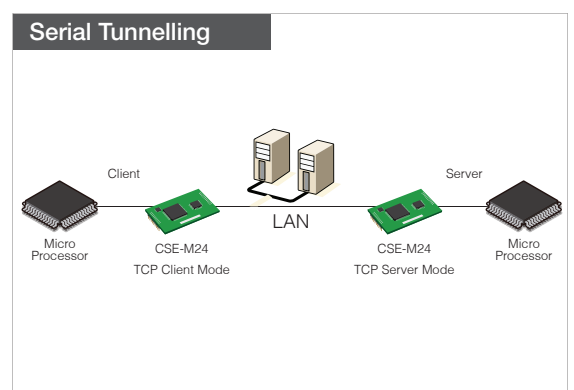
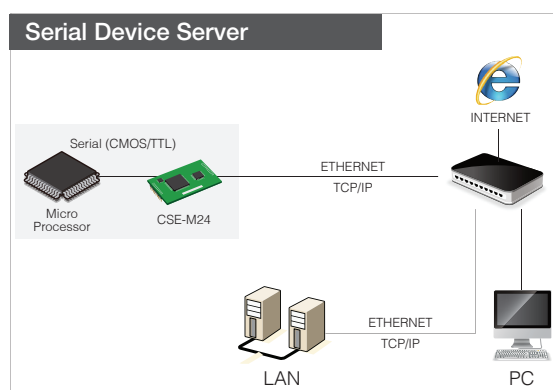
Features

- 4 x UART (3.3V level)
- 10/100Mbps Ethernet
- 高速UART端口(最大支持460,800bps)
- 数据包分隔符设定功能
- 支持IPv6(IPv4 / IPv6协议栈)

Applications



System Diagram



Specifications

Serial Physical Interface	
Serial Interface	4 x UART, 3.3V level with 5V tolerant input
	RXD, TXD, RTS (TXDE for RS485), CTS, GND
Connector	2 X 12 2mm pitch pin header X 2
Serial Port Properties	
Baudrate	300bps ~ 460,800bps (300bps ~ 230,400bps in RS485 and Xon/Xoff)
Data Bits	8bits, 7bits with parity
Parity	None, Even, Odd, Mark, Space
Stop Bit	1, 1.5, 2
Network Physical Interface	
Network Interface	10Base-T/100Base-TX Ethernet
	Ethernet Speed Auto Sense
	1:1 or Cross-over Cable Auto Sense
	Simple External Circuit Required
Software Functions	
Protocols	IPv4/IPv6 dual stack, ICMPv6/TCPv6/UDPv6
	TCP, UDP, IP, ICMP, ARP, TELNET
	DHCP, PPPoE, DNS, DDNS
Security	IP & MAC filtering - Restrict host or network
	Password for Configuring
Communication Mode	TCP Server (T2S)
	TCP Client (COD)
	TCP Server/Client with AT command (ATC) - Patent
	UDP Mode (U2S)
Additional Functions	Separator settings for packet fragmentation
	TCP Server/Client Mode
	Sending MAC address Option
Management	
ezManager	Configuration and Monitoring Tool through Network and Serial
TELNET	Telnet Login
AT Command	Configuring in ATC mode - Patent
Supplementary Software	
ezManager	Configuration Tool for Windows
ezVSP	Serial to Network Virtual Driver for Windows
ezTerm	Simple TCP/IP Communication Test Tool
Dimension	
Size	70mm X 50mm X 9mm
Operating Environment	
Input Voltage	DC 3.3V
Current Consumption	270mA typical
Operating Temperature	0°C ~ +70°C
Storage Temperature	-40°C ~ +85°C